

Configuration Manual

MSc Research Project
MSc FinTech

Merlin Raju
X22239839@student.ncirl.ie

School of Computing
National College of Ireland

Supervisor: Mr. Victor Del Rosal

National College of Ireland
MSc Project Submission Sheet
School of Computing



Student Name: Merlin Raju
Student ID: X22239839
Programme: Msc FinTech
Year: 2023
Module: Research Project
Lecturer: Mr. Victor Del Rosal
Submission Due Date: 16/08/2024
Project Title: The Rise Of Neo Banking In India: Opportunities And Challenges

Word Count: 624

Page Count: 6

I hereby certify that the information contained in this (my submission) is information pertaining to research I conducted for this project. All information other than my own contribution will be fully referenced and listed in the relevant bibliography section at the rear of the project.

ALL internet material must be referenced in the bibliography section. Students are required to use the Referencing Standard specified in the report template. To use other author's written or electronic work is illegal (plagiarism) and may result in disciplinary action.

Signature: Merlin Raju
Date: 16/08/2024

PLEASE READ THE FOLLOWING INSTRUCTIONS AND CHECKLIST

Attach a completed copy of this sheet to each project (including multiple copies)	<input checked="" type="checkbox"/>
Attach a Moodle submission receipt of the online project submission, to each project (including multiple copies).	<input checked="" type="checkbox"/>
You must ensure that you retain a HARD COPY of the project, both for your own reference and in case a project is lost or mislaid. It is not sufficient to keep a copy on computer.	<input type="checkbox"/>

Assignments that are submitted to the Programme Coordinator Office must be placed into the assignment box located outside the office.

Office Use Only	
Signature:	
Date:	
Penalty Applied (if applicable):	

Configuration Manual

Merlin Raju

X22239839@student.ncirl.ie

1 Introduction

This configuration manual is part of the research paper provided as a section of the MSc Fintech module. It outlines the methods used to conduct the study and provides detailed information about the technology and hardware setup of the system used to produce the results. This ensures that other researchers can replicate the study's findings.

2 System Configuration

This section discusses the system configuration required for executing the analysis

2.1 Hardware Requirements

- Device Name: Merli
- Windows 11 Home Single Language
- AMD Ryzen 7 7735HS with Radeon Graphics 3.20 GHz
- RAM: 16 GB (15.2 usable)

2.2 Software

- NVivo14.23.3(61): The analysis of the data and execution of research methods were carried out using NVivo 14.23.3(61) software

3. Installation of NVivo Software

NVivo software was set up to facilitate data analysis and apply the qualitative methods outlined in this study. Techniques like thematic coding, content analysis, and pattern identification were conducted using NVivo to produce the research outcomes.

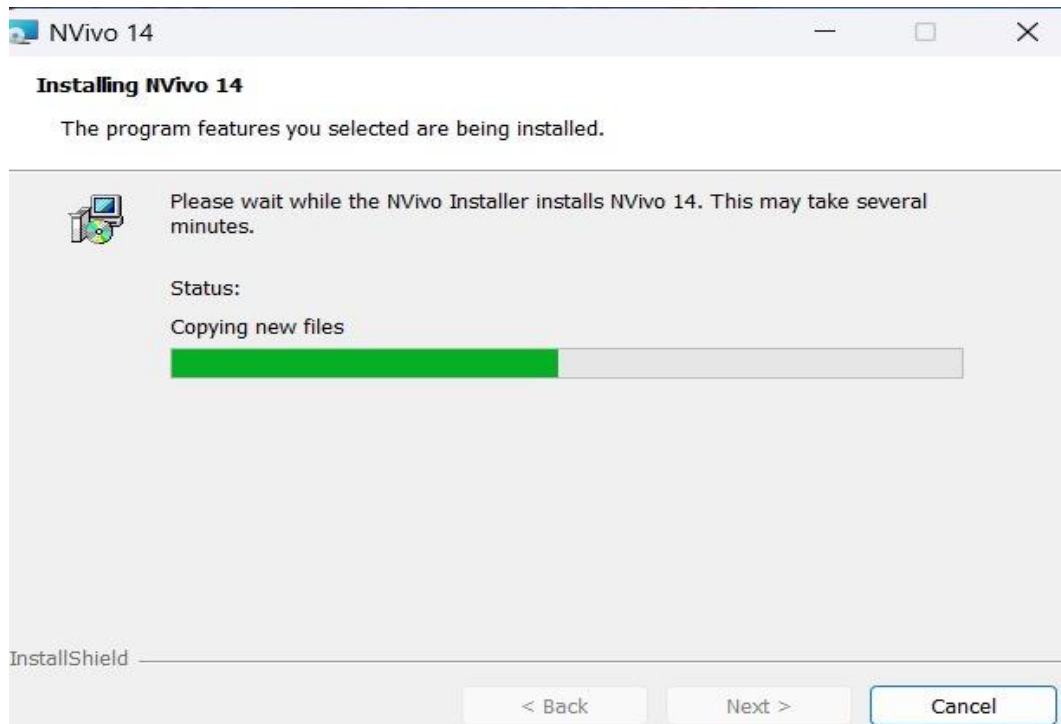


Figure 1

4. Importing the Data

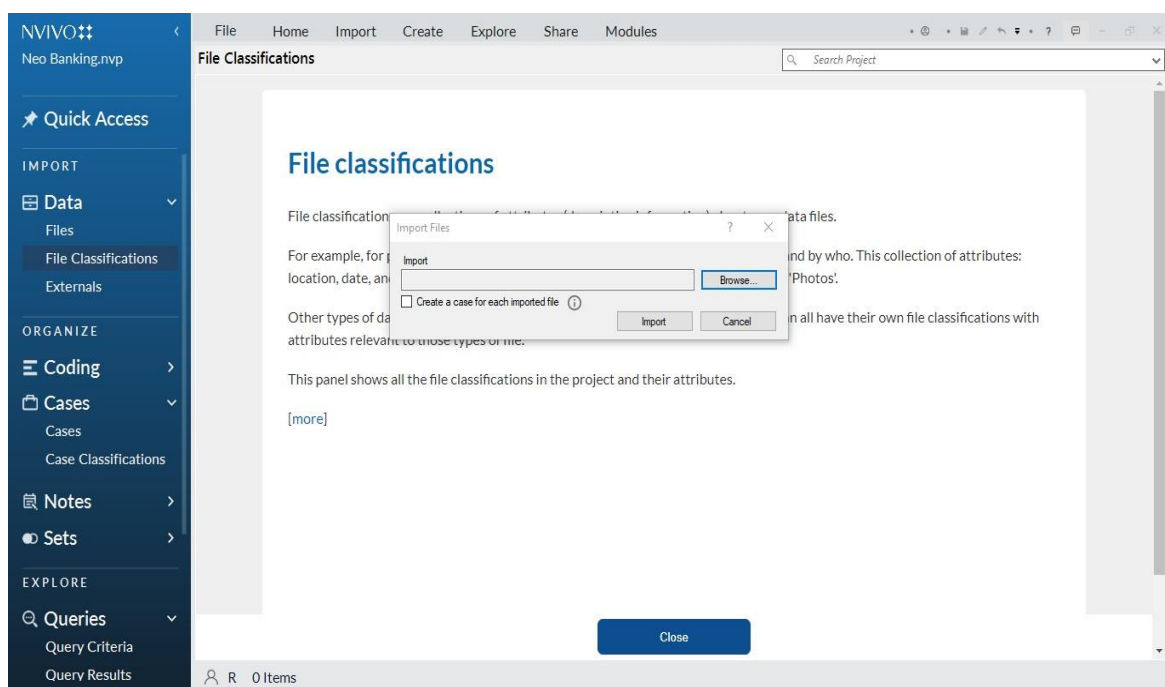


Figure 2

1. Open Project: Launch NVivo and open the project.
2. Select Import Option: Navigate to the "Data" tab in the ribbon, then click on "Files." Choose the type of file.
3. Choose and Import Files: Browse and select files, and click "Open."

5. Techniques used for analysis

Once the data was imported into NVivo, the following techniques were applied.

5.1 Creating Codes

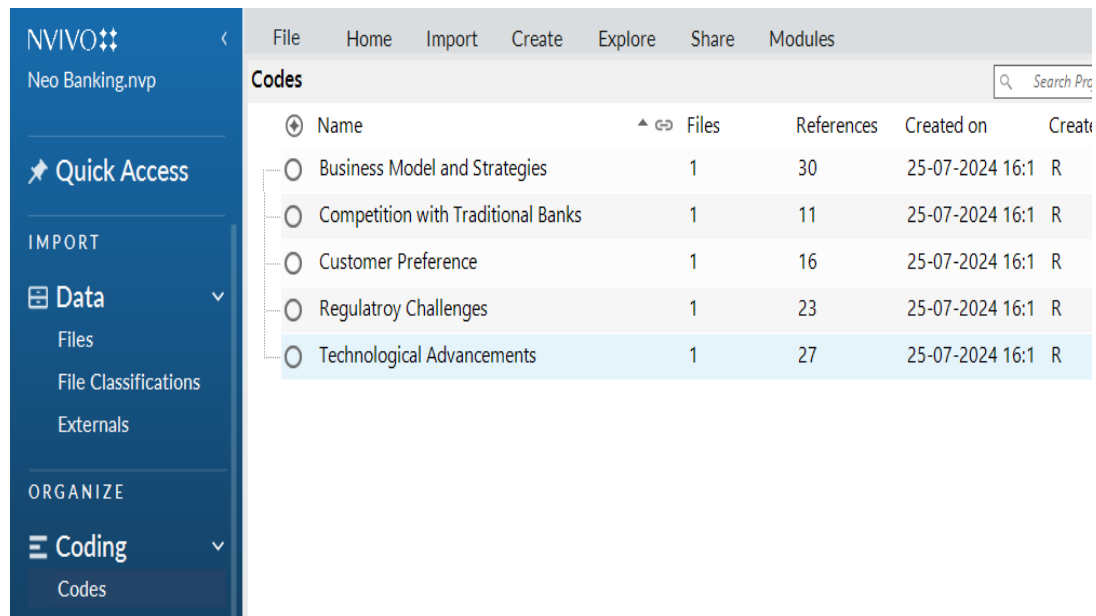


Figure 3

1. Access Coding Panel: Navigate to the "Analyze" tab and select "Code."
2. Select Content: Highlight the relevant text or media segment.
3. Create or Apply Code: Right-click and choose "Code Selection" to create a new code or apply an existing one.

5.2 Coding the Transcript

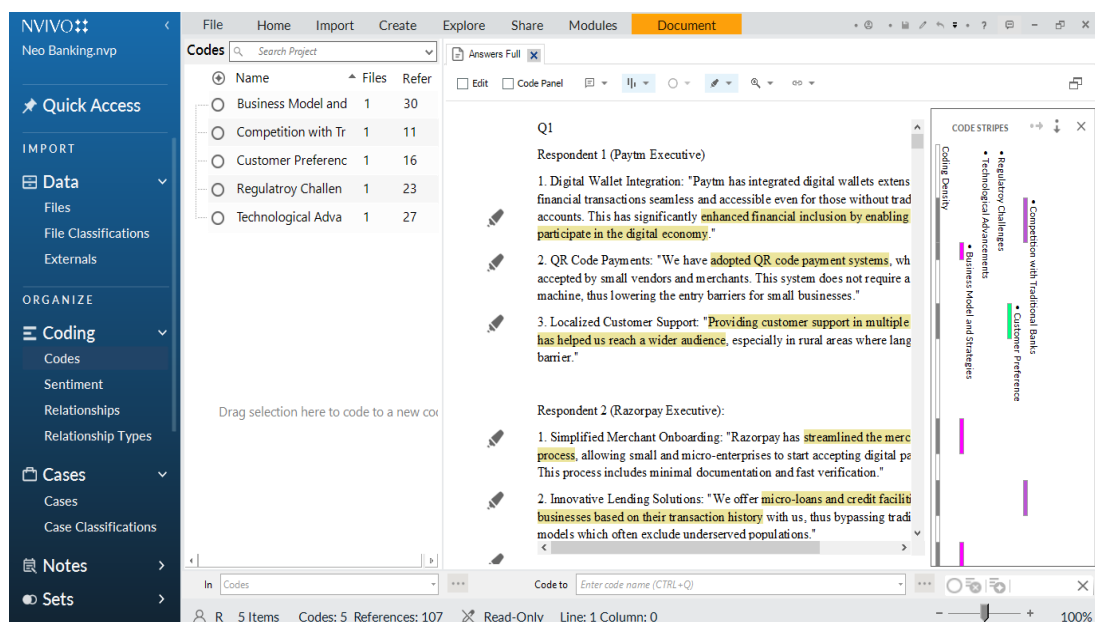


Figure 4

1. Open Transcript: Double-click the transcript to view it in the coding workspace.
2. Highlight Text: Select the relevant text or sections in the transcript.
3. Code Text: Right-click the highlighted text, choose "Code Selection," and apply an existing code.

5.3 Generating Wordcloud

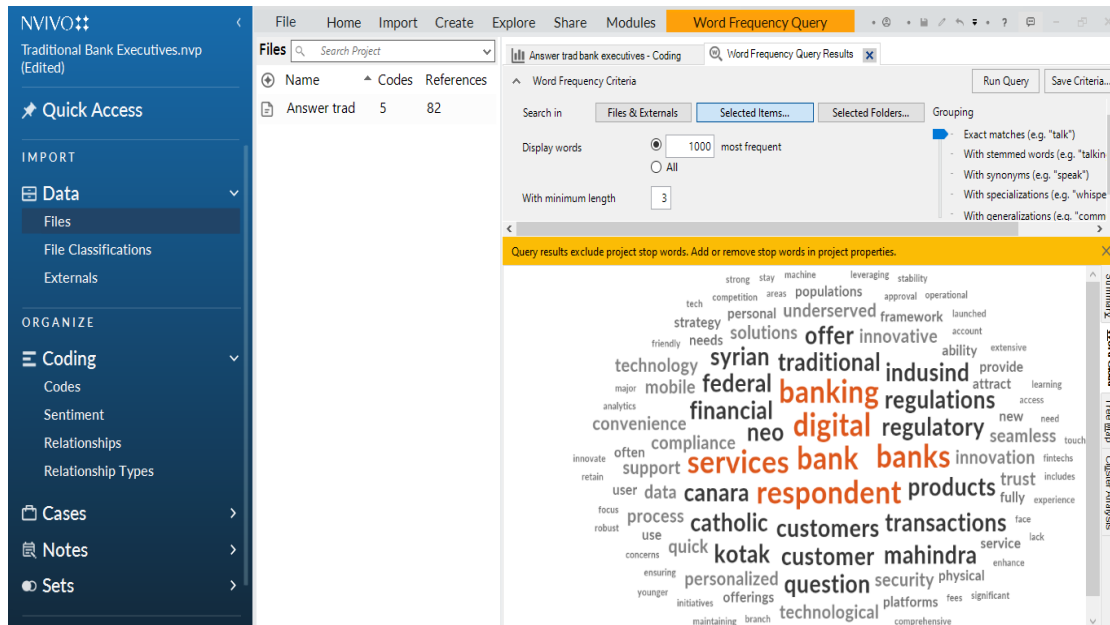


Figure 5

Generate Word Cloud: Go to the "Explore" tab, select "Word Cloud," and choose the relevant options to create and display the word cloud.

5.4 Creating Chart

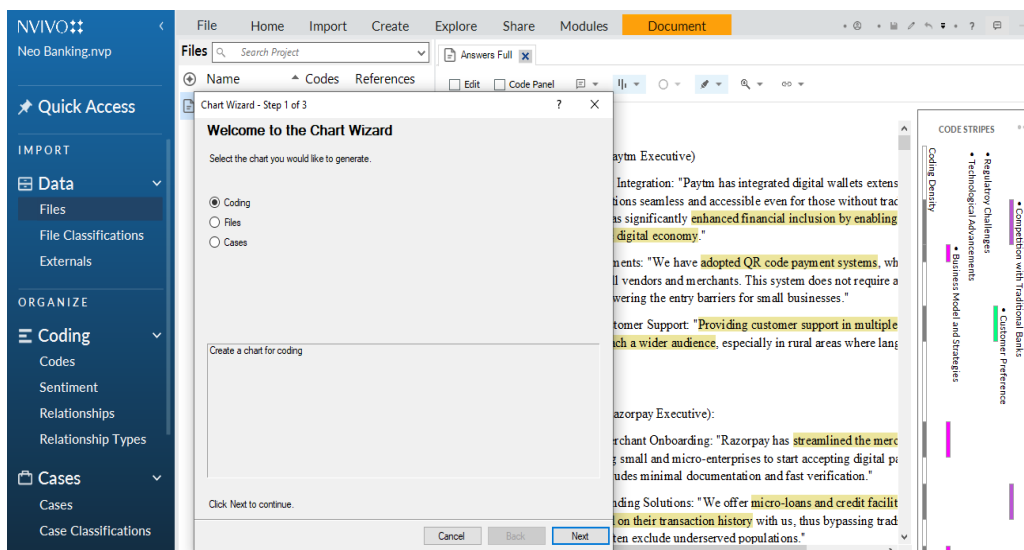


Figure 6

1. Navigate to Charts: Go to the "Explore" tab and select "Charts."
2. Select Chart Type: Choose the desired chart type (e.g., bar chart, pie chart).

3. Choose Data: Select the nodes or attributes to include in the chart.
4. Customize and Generate: Adjust the chart settings as needed and click "OK" to generate the chart.

5.5 Generated Chart

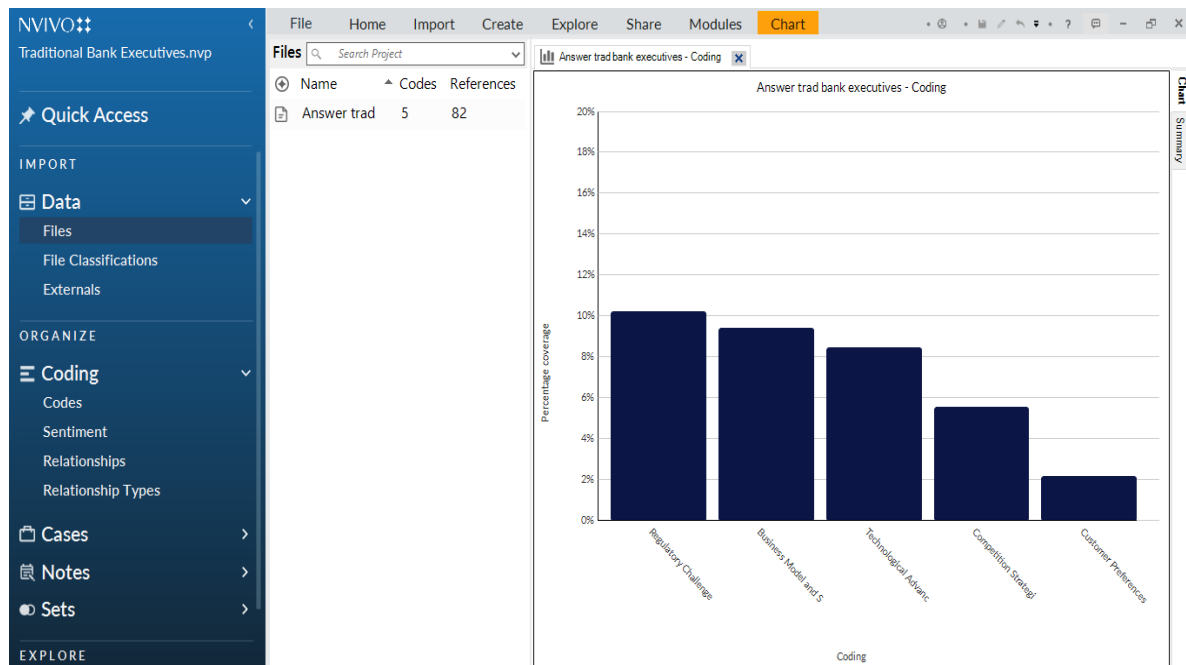


Figure 7

5.6 Generating Table

The screenshot shows the NVIVO interface with the 'Table' module selected. The table is titled 'Answers fintech experts - Coding'. It lists coding categories and their percentage coverage for two groups: Neo banks and Traditional Banks.

Coding	Percentage coverage
Codes\\Neo banks\\Business model and stra	10.20%
Codes\\Neo banks\\Competition Strategies	2.87%
Codes\\Neo banks\\Customer Preferences	5.92%
Codes\\Neo banks\\Regulatory Challenges	9.46%
Codes\\Neo banks\\technological advances	1.46%
Codes\\Traditional Banks\\business model a	0.74%
Codes\\Traditional Banks\\Competition Strat	4.74%
Codes\\Traditional Banks\\Customer Prefere	8.83%
Codes\\Traditional Banks\\Regulatory Challe	3.61%

Figure 8

5.7 Generating Excel chart

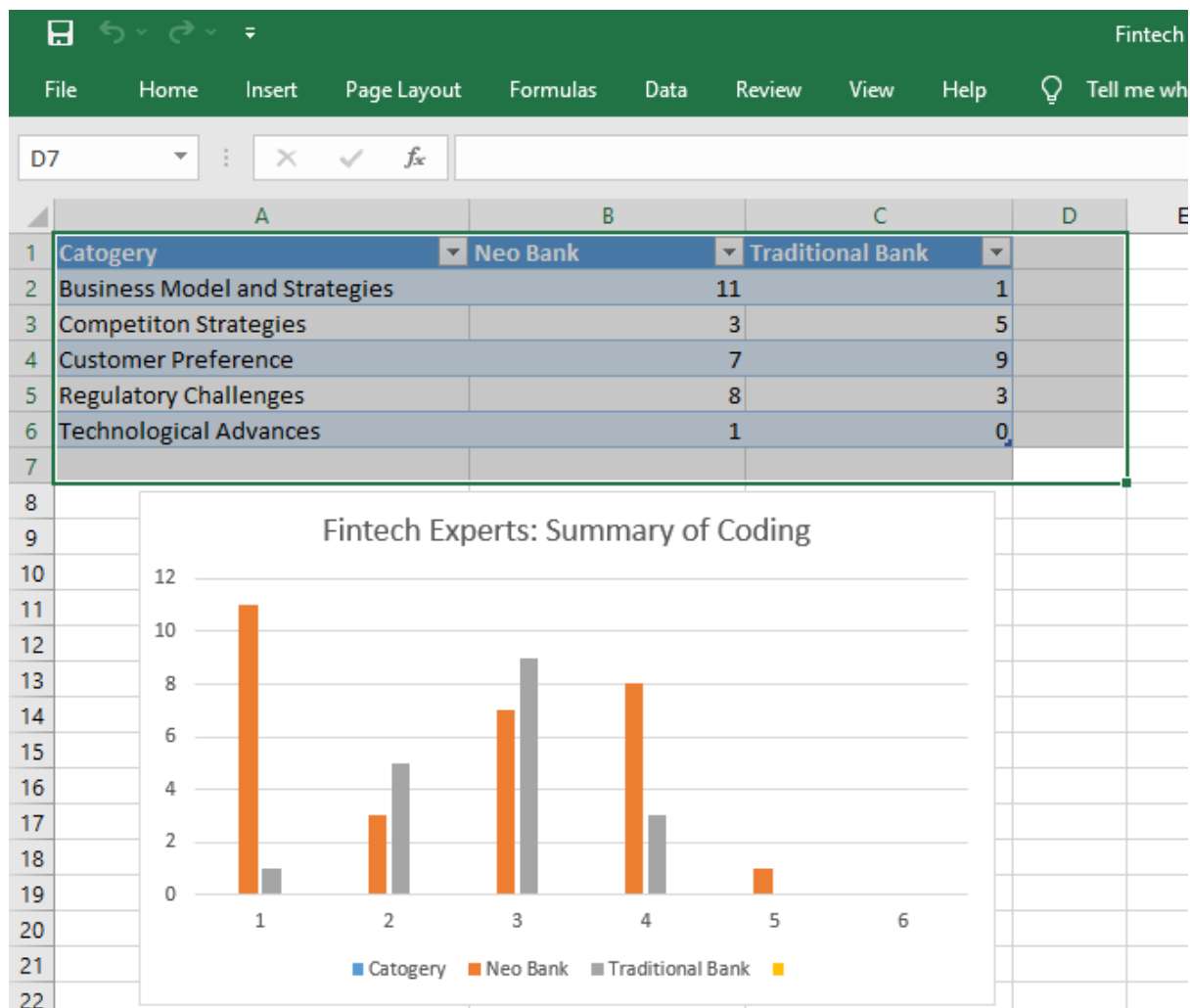


Figure 9