

Configuration Manual

MSc Research Project
MSc AI for Business

Forename Surname
Student ID: 22191381

School of Computing
National College of Ireland

Supervisor: Victor Del Rosal

National College of Ireland
Project Submission Sheet
School of Computing



Student Name:	Dilara Tosun
Student ID:	22191381
Programme:	MSc AI for Business
Year:	2023
Module:	MSc Research Project
Supervisor:	Victor Del Rosal
Submission Due Date:	4th December 2023
Project Title:	Configuration Manual
Word Count:	XXX
Page Count:	12

I hereby certify that the information contained in this (my submission) is information pertaining to research I conducted for this project. All information other than my own contribution will be fully referenced and listed in the relevant bibliography section at the rear of the project.

ALL internet material must be referenced in the bibliography section. Students are required to use the Referencing Standard specified in the report template. To use other author's written or electronic work is illegal (plagiarism) and may result in disciplinary action.

Signature:	
Date:	4th December 2023

PLEASE READ THE FOLLOWING INSTRUCTIONS AND CHECKLIST:

Attach a completed copy of this sheet to each project (including multiple copies).	<input type="checkbox"/>
Attach a Moodle submission receipt of the online project submission , to each project (including multiple copies).	<input type="checkbox"/>
You must ensure that you retain a HARD COPY of the project , both for your own reference and in case a project is lost or mislaid. It is not sufficient to keep a copy on computer.	<input type="checkbox"/>

Assignments that are submitted to the Programme Coordinator office must be placed into the assignment box located outside the office.

Office Use Only	
Signature:	
Date:	
Penalty Applied (if applicable):	

Contents

1	Introduction	1
2	System Requirements	1
3	Data Requirements	3
4	Installation Steps	5
5	Configuration Options	6
6	Security Recommendations	12
7	Conclusion	12

Configuration Manual

Dilara Tosun
22191381

1 Introduction

This manual configuration guide contains step-by-step instructions for setting up and configuring the RPA and AI-based document processing system. This document is designed to ensure efficient and effective use of the system by its users.

2 System Requirements

The minimum technical requirements for setting up this system are shown in Figure 1. Additionally, the latest versions of software such as UiPath, RapidMiner, and DBeaver should be installed.

Figure 1: System Requirements

The screenshot displays the Windows 'System Requirements' window, which is divided into two main sections: 'Device specifications' and 'Windows specifications'. Each section has a 'Copy' button and an expand/collapse arrow in the top right corner.

Device specifications

Device name	DESKTOP-VVL64PV
Processor	Apple Part 000 r0p0 2.00 GHz
Installed RAM	4.00 GB
Device ID	CDABAB09-89E1-4774-B85D-42EFD5B0E6EC
Product ID	00330-80000-00000-AA521
System type	64-bit operating system, ARM-based processor
Pen and touch	No pen or touch input is available for this display

Related links [Domain or workgroup](#) [System protection](#) [Advanced system settings](#)

Windows specifications

Edition	Windows 11 Pro
Version	22H2
Installed on	24/10/2023
OS build	22598.1
Experience	Windows Feature Experience Pack 1000.22598.1.0

[Microsoft Services Agreement](#)
[Microsoft Software License Terms](#)

Figure 2: UiPath Logo



Figure 3: RapidMiner Logo



Figure 4: Dbeaver Logo



3 Data Requirements

This section addresses the data requirements necessary for configuring our RPA and AI-based document processing system using the DBeaver database. Ensuring the following data properties is crucial for the system to function effectively and accurately:

Database Content:

Our database should contain information such as employee names, the departments they are associated with, their experiences, and the business units they are registered in. This information is essential for the system to correctly assign tasks to the appropriate personnel.

Data Format and Structure:

Data should be stored in the DBeaver database in an appropriate format and structure. In particular, XML and HTML invoice data should be organized in a way that the system can read and process them effectively. The database design should facilitate data integration and querying, allowing for efficient data management and access.

Data Integrity and Accuracy:

The integrity and accuracy of data in the database are critical for the reliability of the system's outputs. Data entry processes should be carefully managed to ensure data integrity and accuracy.

Security and Privacy Standards:

Appropriate security measures should be in place in the database to protect sensitive data and ensure privacy. Data management and storage should comply with data protection and privacy standards.

Figure 5: Database

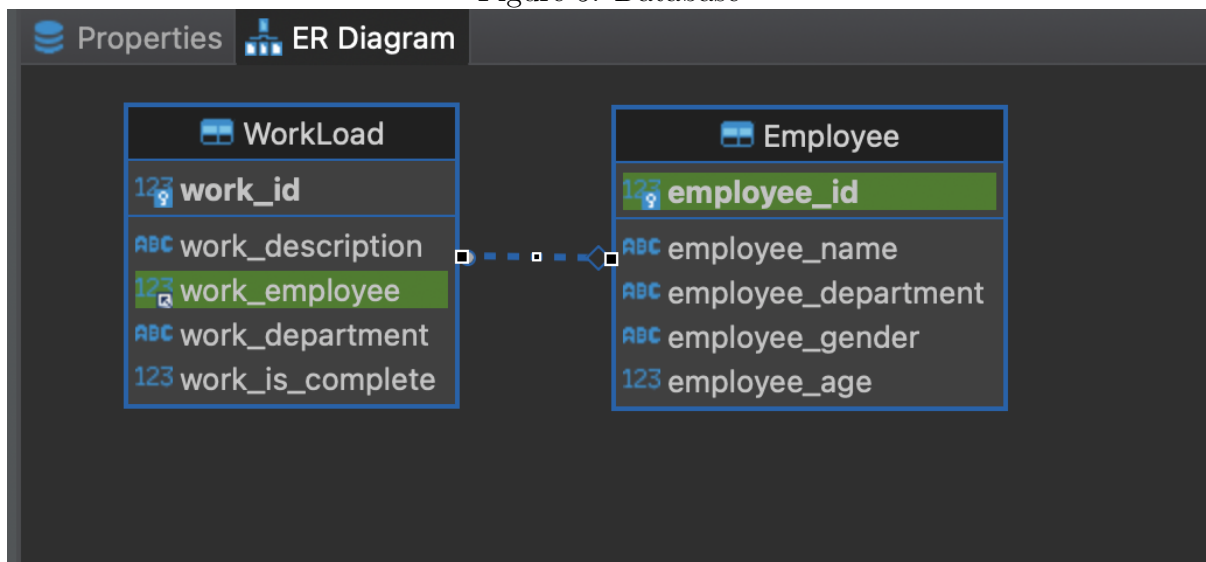


Figure 6: Database

employee _id	employee_ name	_departm ent	employee _gende	employee _age	work _id	work_ description	emplo yee	work_dep artment	work_is_ complete
1	Employee1	Accountin	Female	30	6	Sample6.xml	1	Marketing	1
2	Employee2	Accountin	Female	31	26	Sample26.xml	2	Accounting	1
3	Employee3	Accountin	Female	22	3	Sample3.xml	3	Legal	1
4	Employee4	Accountin	Male	24	2	Sample2.xml	4	Research ar	1
5	Employee5	Accountin	Female	29	1	Sample1.xml	5	Business De	1
6	Employee6	Accountin	Female	23	4	Sample4.xml	6	Product Ma	1
7	Employee7	Accountin	Male	23	12	Sample12.xml	7	Human Res	1
8	Employee8	Accountin	Female	36	864	Sample864.xml	8	Research ar	1
9	Employee9	Accountin	Female	30	8	Sample8.xml	9	Training	1
10	Employee10	Accountin	Female	33	13	Sample13.xml	10	Sales	1

4 Installation Steps

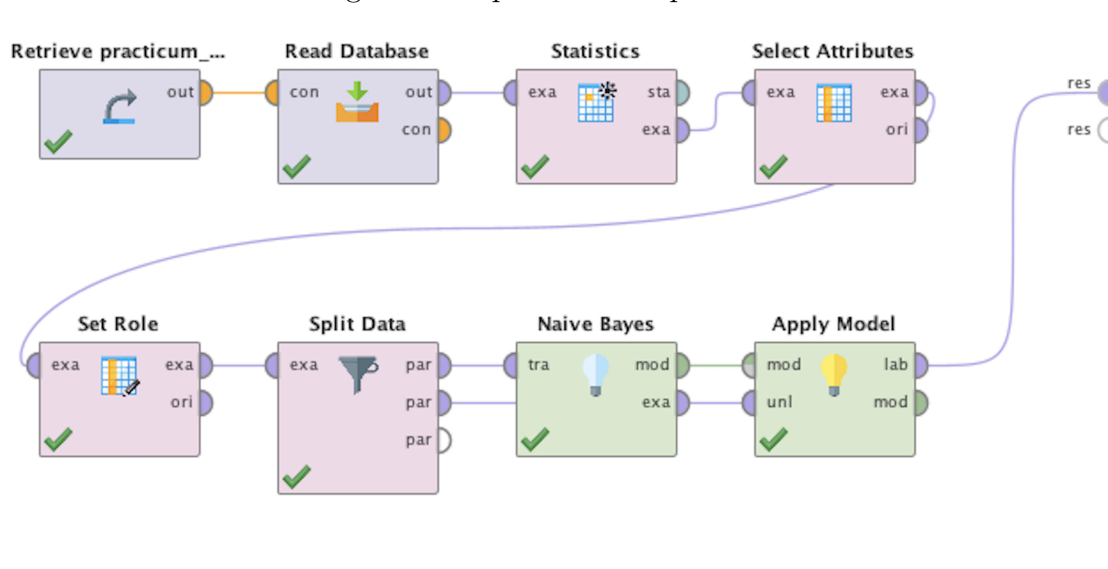
The installation process includes the following steps:

Download and install UiPath from the official website. Download and install Rapid-Miner from official website. Acquire DBeaver and configure it according to the system requirements.

5 Configuration Options

In RapidMiner, configure the Naive Bayes model by following these steps in Figure 7.

Figure 7: RapidMiner Steps



In UiPath, set up the invoice processing workflow as follows in Figure 8, Figure 9, Figure 10, Figure 11, Figure 12.

Figure 8: UiPath Step 1

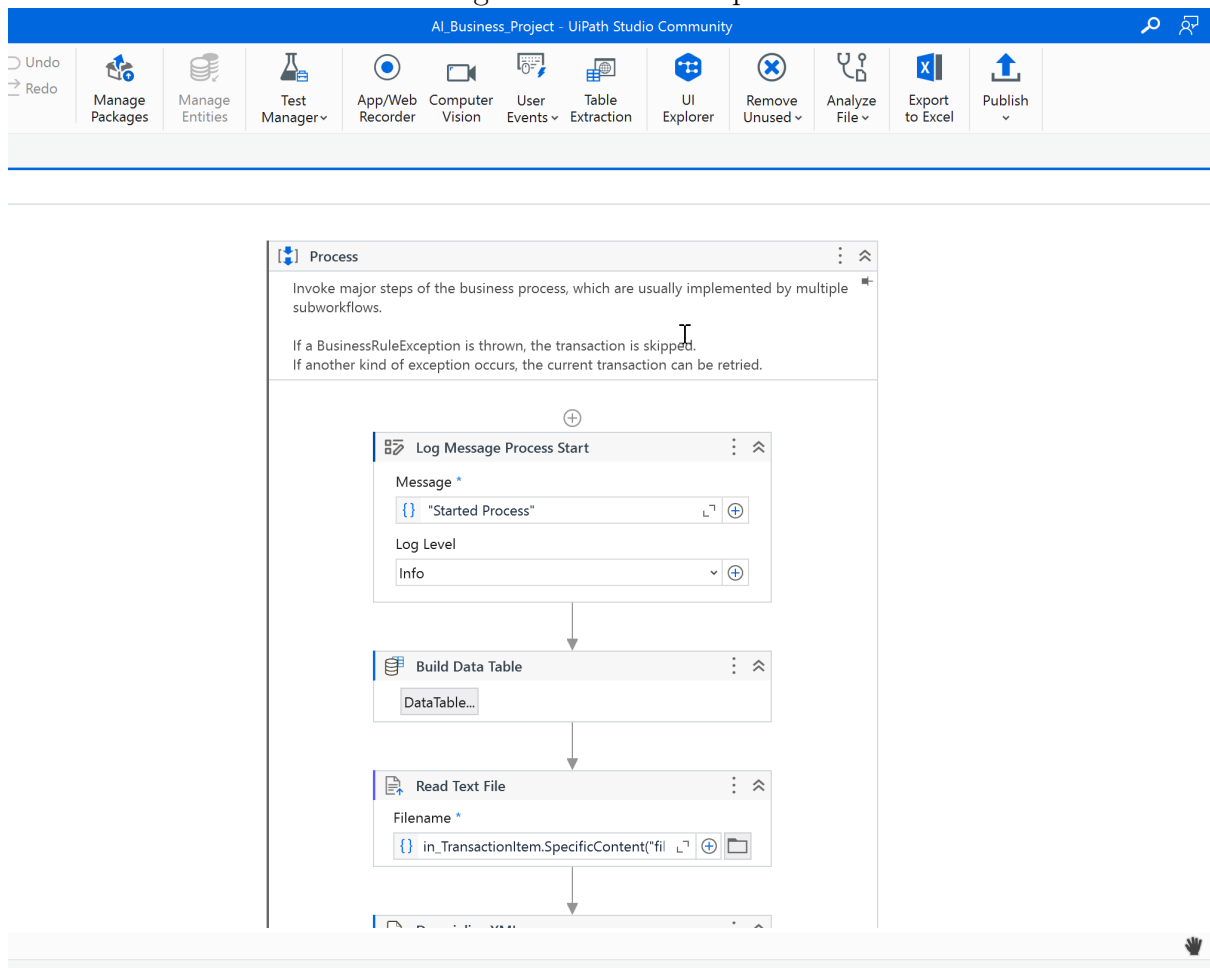


Figure 9: UiPath Step 2

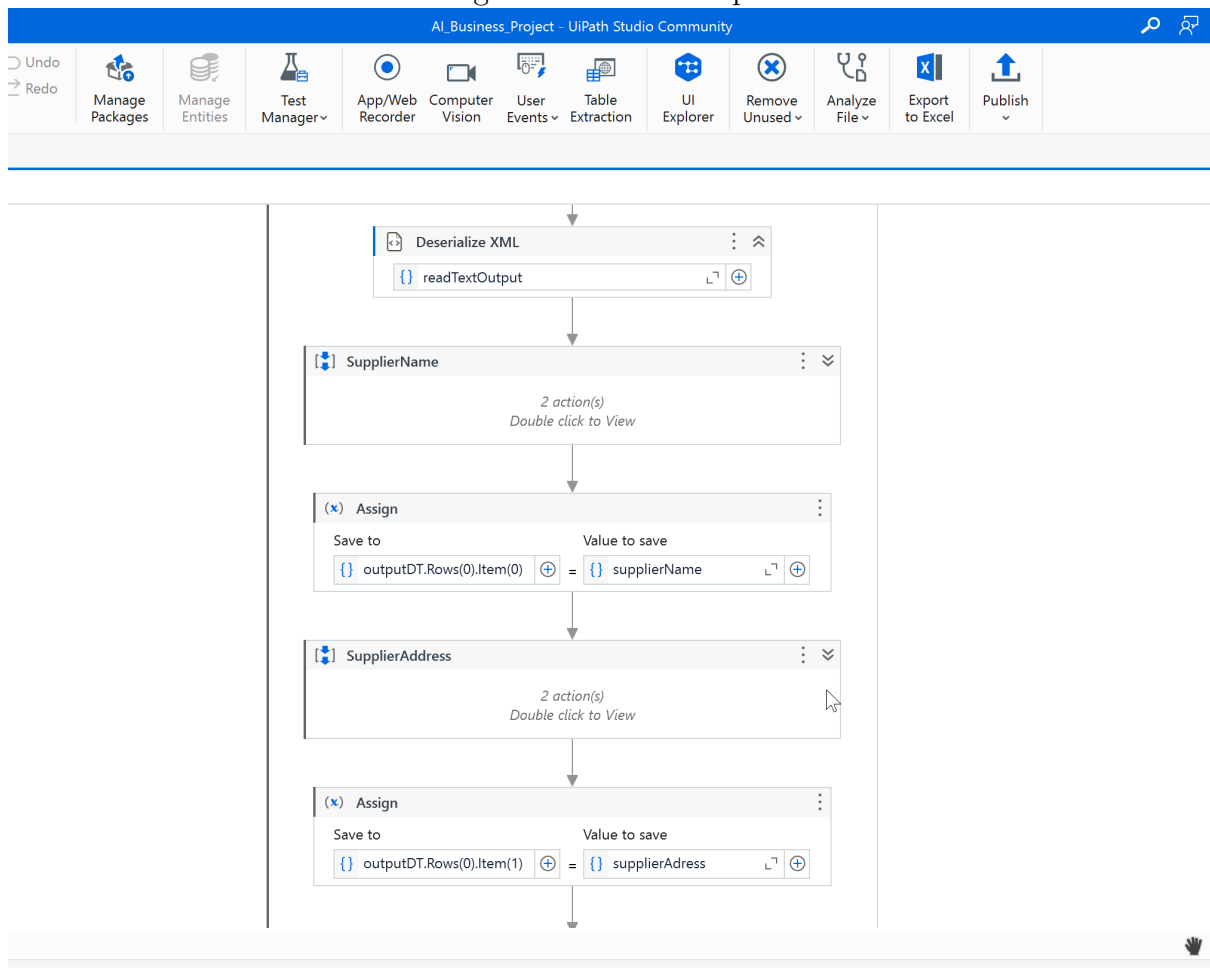


Figure 10: UiPath Step 3

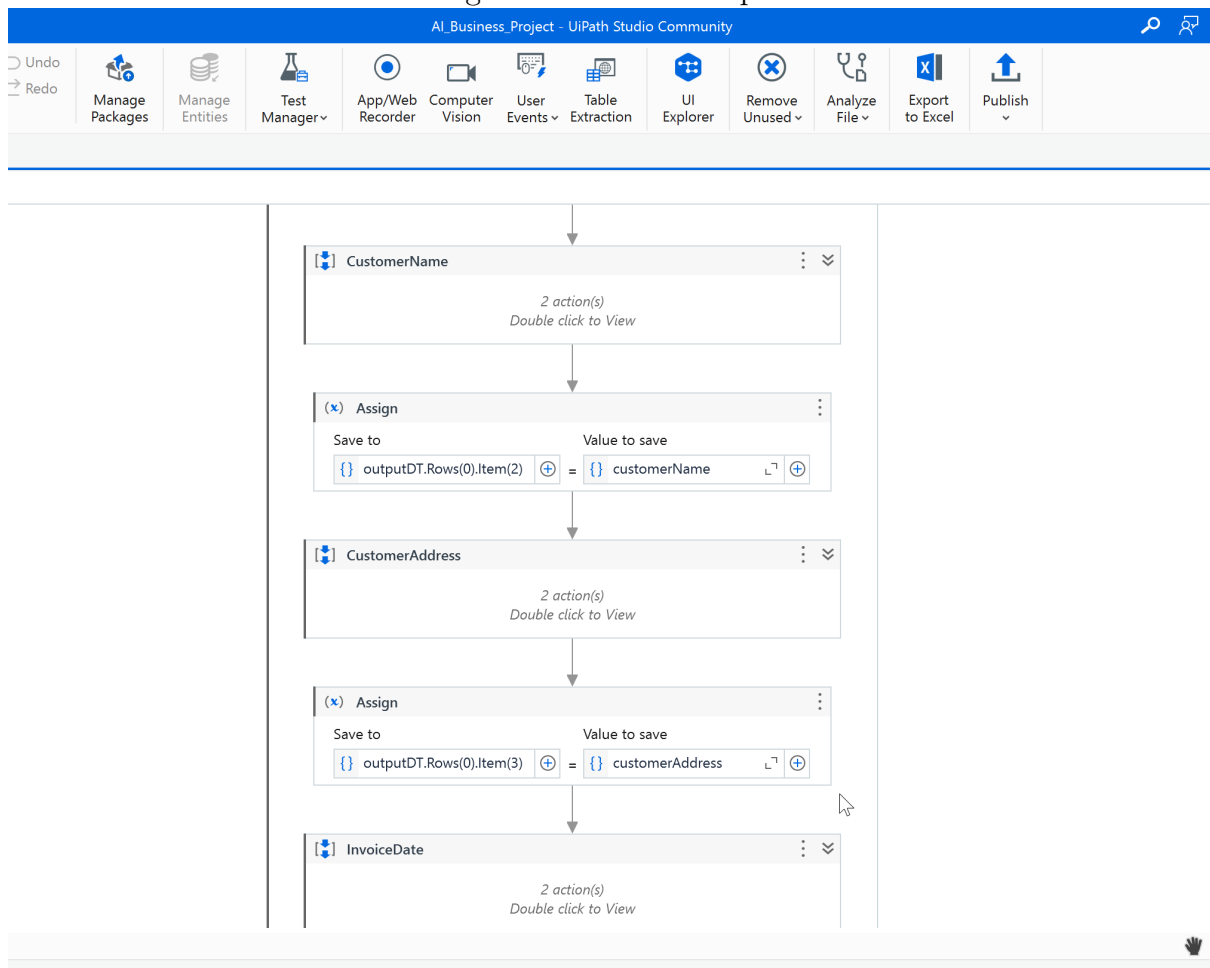


Figure 11: UiPath Step 4

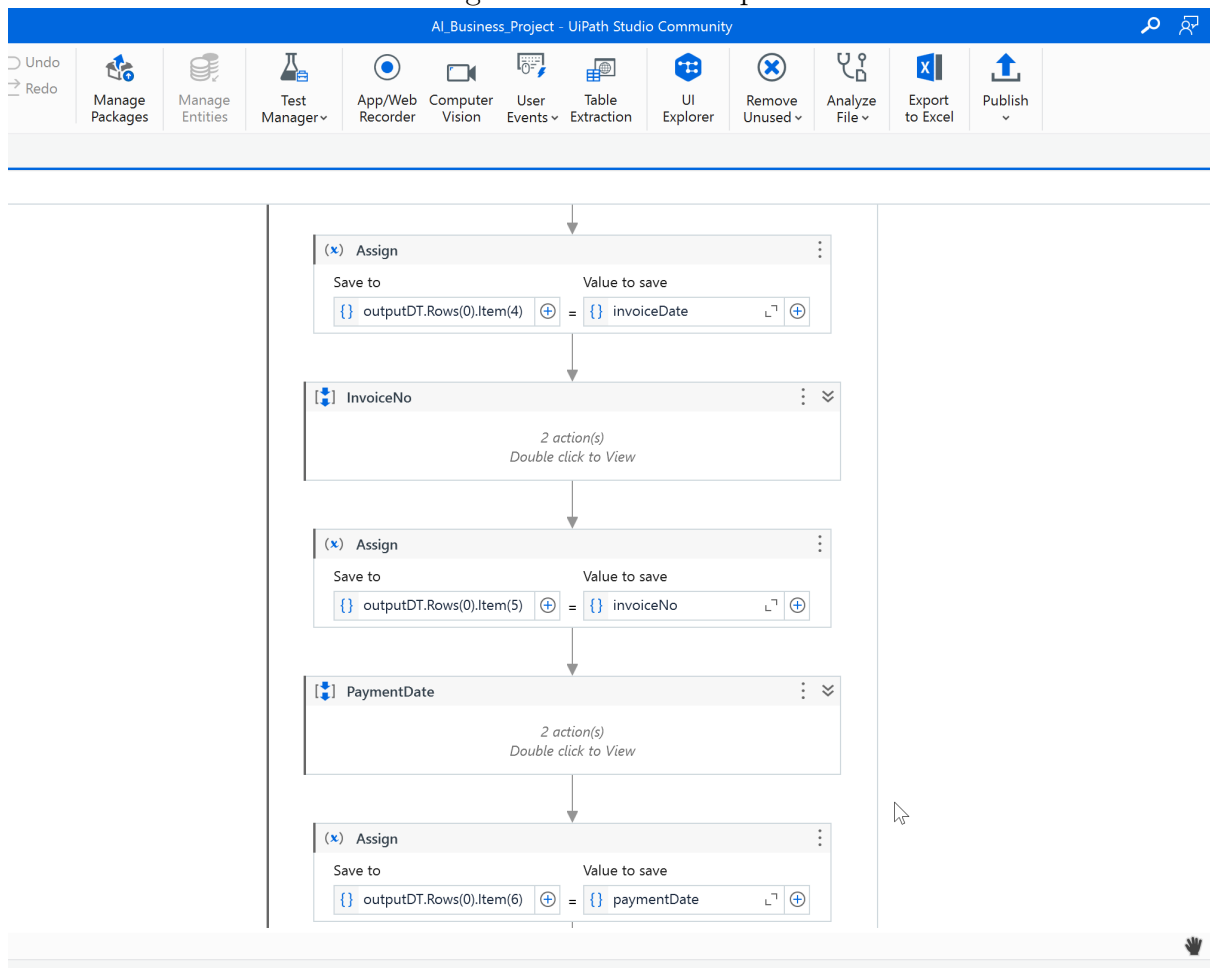
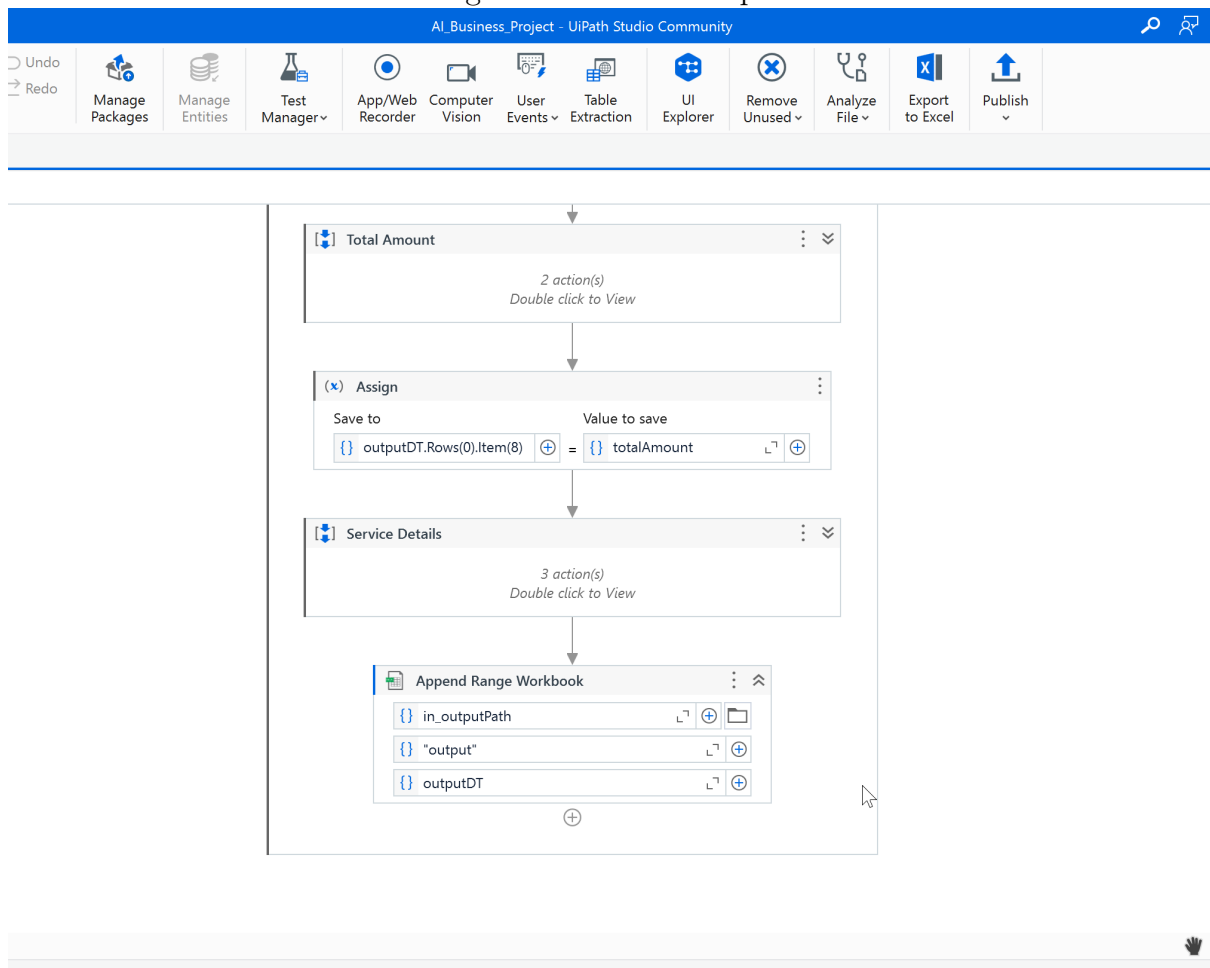


Figure 12: UiPath Step 5



6 Security Recommendations

Security plays a crucial role in the successful use of RPA and AI-based systems. It is essential for users to be mindful of data protection, regularly update software, and apply strict user authorization practices. Secure network connections and strong passwords should be used, along with regular data backups. Additionally, educating users about security protocols and emergency procedures is vital to prepare for potential security breaches.

7 Conclusion

This manual configuration document comprehensively presents all necessary steps and guidelines for setting up and managing our RPA and AI-based document processing system. The information detailed here is designed to enable users to efficiently and effectively install and manage the system. Security recommendations and solutions to common problems are crucial for maintaining the safe and smooth operation of the system.

Users are encouraged to use this document as a resource for better understanding the system and for finding quick solutions when encountering any issues. Additionally, this document will serve as a reference point for future versions and updates of the system.

Finally, the continuous improvement of this document and the system relies on being open to user feedback and industry innovations. Suggestions and feedback for enhancing the user experience are highly valued. We hope this document plays a significant role in the effective and efficient use of our RPA and AI-based document processing system.